

Horologix



The place to come for all your Bulle and Eureka restoration parts.

Contact Peter Smith
Telephone 01454-880825
Or Mobile 07969-773480
Email peter_smith@horologix.com

Bulle Clock Serial Number 203401

*Restoration of Bulle Clock
Serial Number 203401*

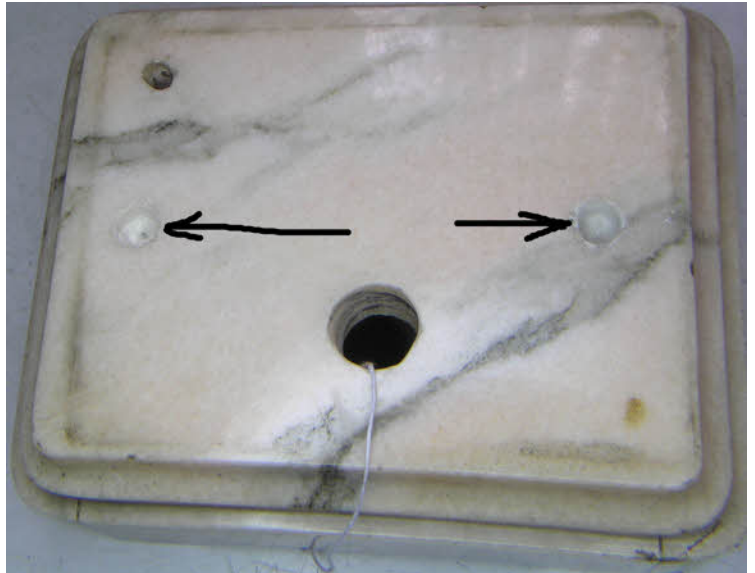
Horologix



The place to come
for all your Bulle
and Eureka restora-
tion parts.

Contact Peter Smith
Telephone 01454-880825
Or Mobile 07969-773480
[Email peter_smith@horologix.com](mailto:peter_smith@horologix.com)

Bulle Clock Serial Number 203401



Photos by kind permission of the owner
This clockette is a four glass model from about 1929. The top and base are a figured pink marble. The case is in pieces with no glass other than a shard about 4 inches long which shows that the replacement will have to be bevelled. The hands are badly bent and will need to be gently persuaded to get them back into shape. The two threaded inserts from the base were loose in the box and will need to be secured in place. These accept two screws which secure the brass base plate to the marble. At least all the frame screws are present. The movement though looks to be complete and apart from dirt is in pretty good shape.

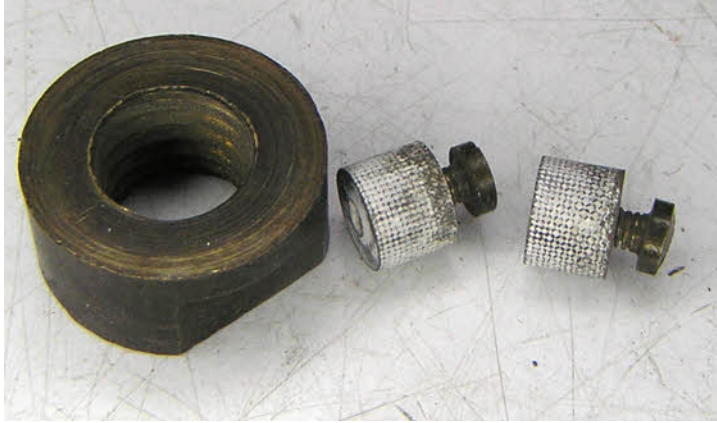
Horologix



The place to come
for all your Bulle
and Eureka restora-
tion parts.

Contact Peter Smith
Telephone 01454-880825
Telephone 01454-880825
Or Mobile 07969-773480
Email peter_smith@horologix.com

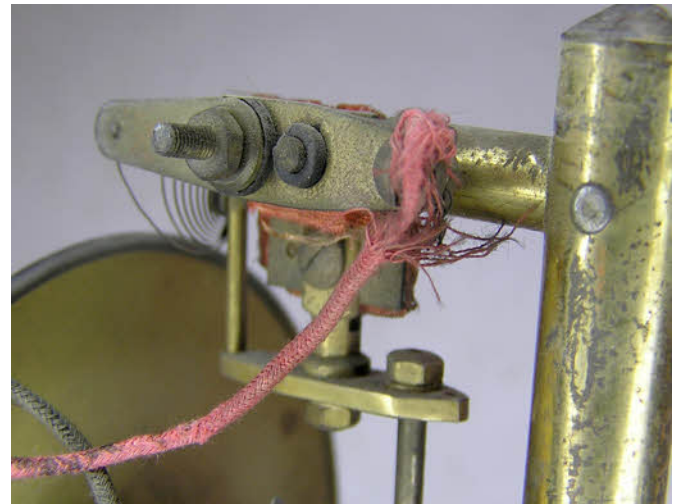
Bulle Clock Serial Number 203401



Above is the frame securing nut and the threaded inserts from the marble base. The photo on the right shows the bent hands and the dial which itself looks dirty but with no major blemishes.



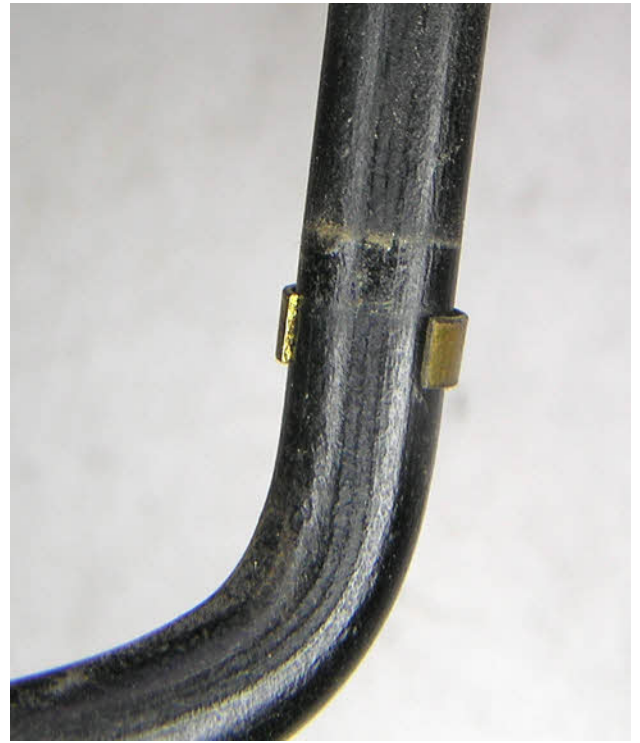
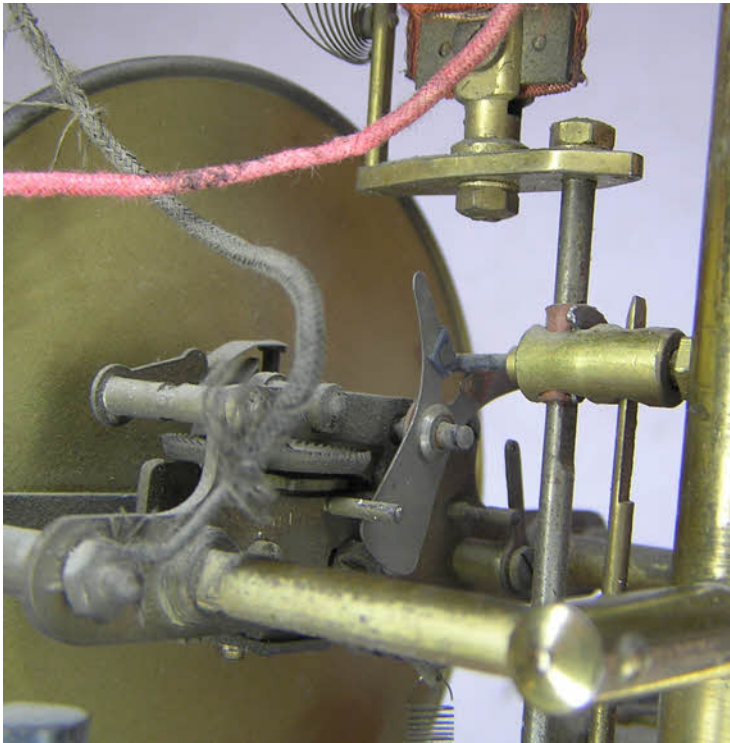
The rating nut has been spared the indignity of being turned down so there is hope that this clock remains mainly intact and untouched.



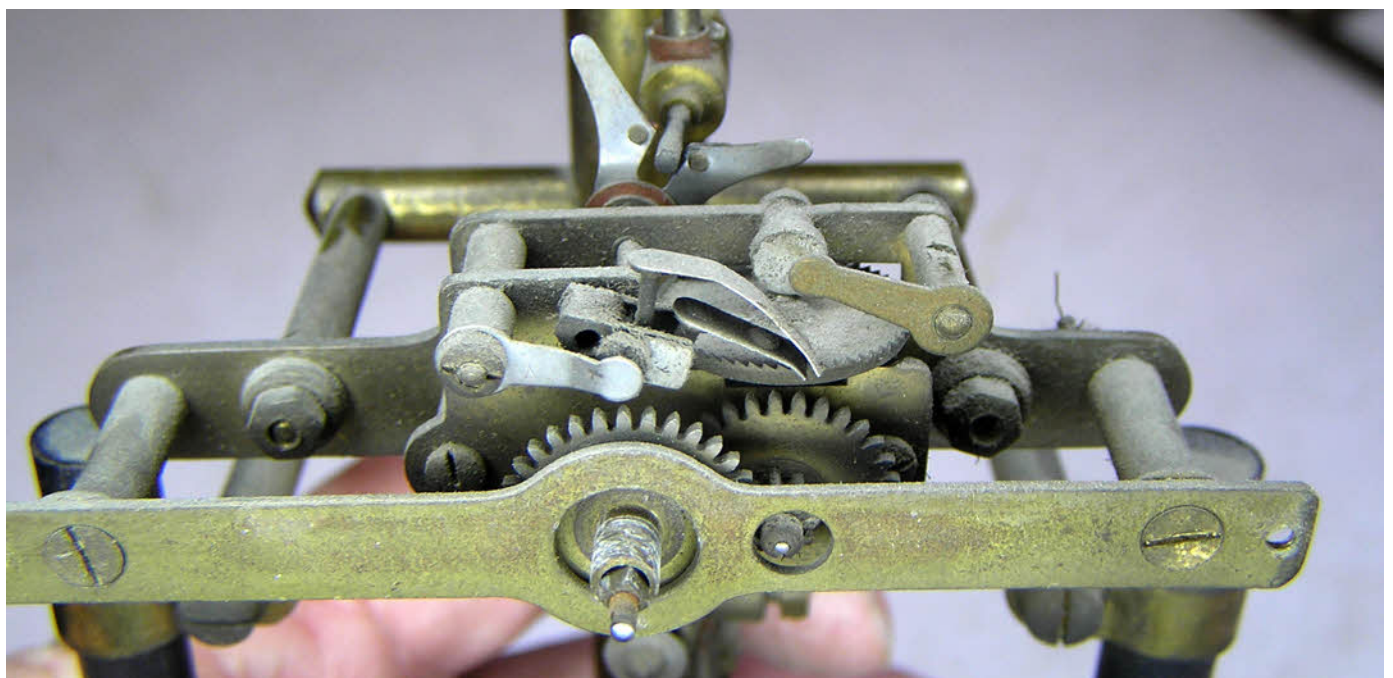
The top of the frame showing the replacement suspension and insulated sub frame that routes the power from the positive side of the battery to the hair spring seen in the background. The wiring and suspension will be replaced.

<h1>Horologix</h1>		<p>The place to come for all your Bulle and Eureka restoration parts.</p>	<p>Contact Peter Smith Telephone 01454-880825 Or Mobile 07969-773480 Email peter_smith@horologix.com</p>
--------------------	---	---	---

Bulle Clock Serial Number 203401



Above is a view of the rear of the movement. All looks to be in place and in good order bar the dirt and dust. The photo top right shows the broken decorative magnet ring. These are quite thin and are sometimes found snapped. It will be replaced. The photo below shows the movement from the front with the two pawls.



Horologix



The place to come
for all your Bulle
and Eureka restora-
tion parts.

Contact Peter Smith
Telephone 01454-880825
Or Mobile 07969-773480
[Email peter_smith@horologix.com](mailto:peter_smith@horologix.com)

Bulle Clock Serial Number 203401



The rear of the movement showing the usual position of the serial number on the later clockettes.



The worm and count wheel are dirty with some rust. But they should clean up well.



The front and base of the movement. Note the sticky white residue on the canon pinion. The hour wheel was jammed solid with it.



The centre arbour was also tight and had a light rust. It too will clean up well.



The fork arbour also had a light rust covering but the fork and contacts look in good condition. The photo on the right shows the coil assembly. The casing will need repainting. I normally do any painting and casework before restoring the movement, thus allowing a good couple of days for drying and hardening.



Horologix



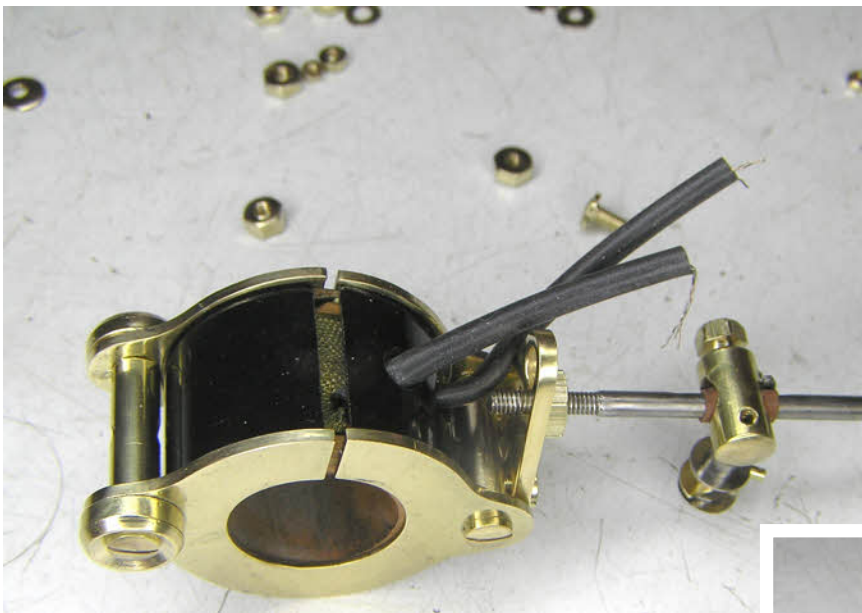
The place to come for all your Bulle and Eureka restoration parts.

Contact Peter Smith
 Telephone 01454-880825
 Or Mobile 07969-773480
 Email peter_smith@horologix.com

Bulle Clock Serial Number 203401



The case parts cleaned and lacquered ready for reassembly. Above are the two new screws turned up to replace the missing ones. These secure the bottom plate to the base via the two threaded inserts.



These last three photos show the replacement decorative ring in place on the magnet, the coil assembly ready to be tested and connected, and the movement ready to be attached to the frame.

Horologix



The place to come for all your Bulle and Eureka restoration parts.

Contact Peter Smith
Telephone 01454-880825
Or Mobile 07969-773480
Email peter_smith@horologix.com

Bulle Clock Serial Number 203401



These photos show the frame and pendulum on a old base for testing as well as a couple of shots showing the movement back in place and connected.



Horologix



The place to come for all your Bulle and Eureka restoration parts.

Contact Peter Smith
Telephone 01454-880825
Or Mobile 07969-773480
Email peter_smith@horologix.com

Bulle Clock Serial Number 203401



The base, top and brass four glass frame ready to receive the movement.

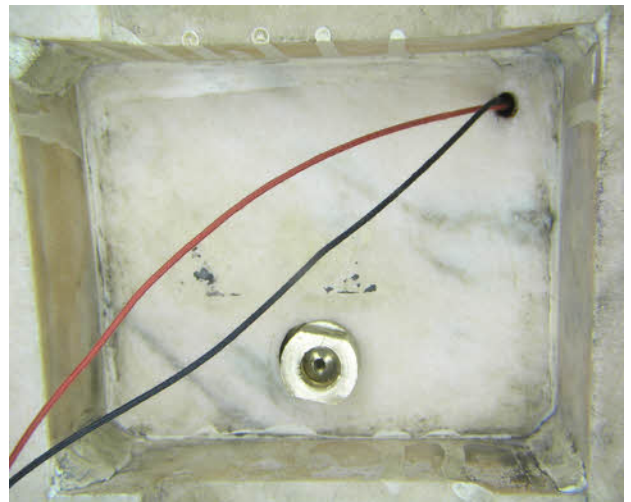
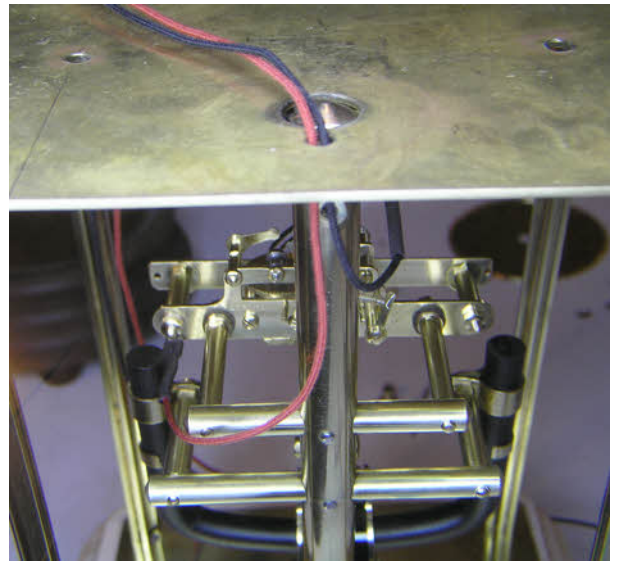
Horologix



The place to come
for all your Bulle
and Eureka restora-
tion parts.

Contact Peter Smith
Telephone 01454-880825
Telephone 01454-880825
Or Mobile 07969-773480
Email peter_smith@horologix.com

Bulle Clock Serial Number 203401



These four photos show the route for the wiring through the frame and marble. Both wires leave the movement through the top of the brass frame and run along the top in a groove cut into the marble top.. It then descends through the brass frame and down the inside of the frame post to the right of the door. It then exits through the frame and marble base. Note that there is no provision to secure the battery to the inside of the marble base. I will not be adding one either. This is because it is better for the battery case to be loose under the base so that the whole clock need only be lifted and place to one side to gain access for changing the battery. The battery case would then be left on the table or shelf with the battery easily accessible. If the battery case were attached to the underside then the whole clock would need to be lifted and turned upside down. A dangerous operation for a heavy marble and glass clock especially when one reaches an age when ones hands aren't so nimble and flexible as they once were.

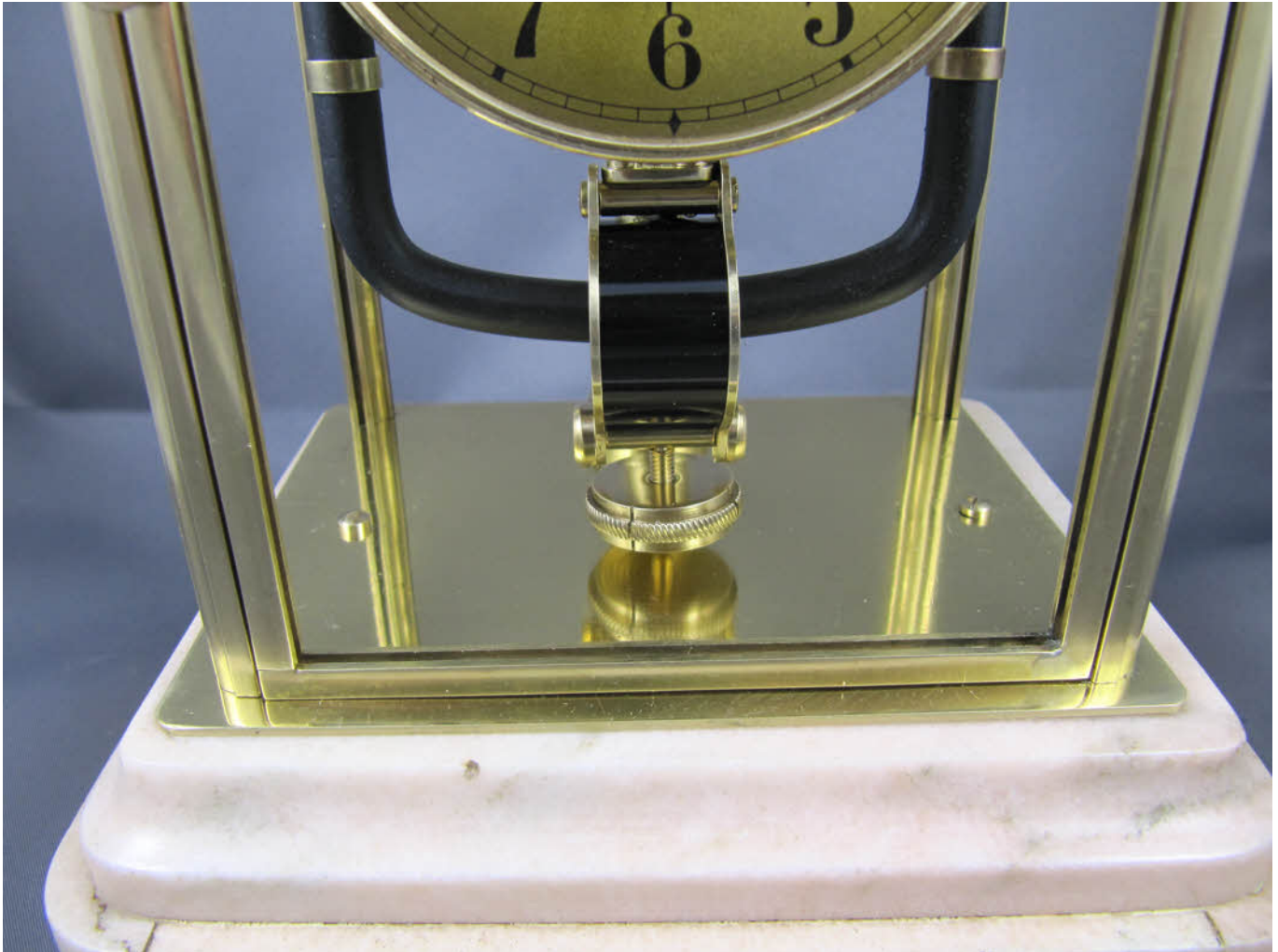
Horologix



The place to come
for all your Bulle
and Eureka restora-
tion parts.

Contact Peter Smith
Telephone 01454-880825
Or Mobile 07969-773480
[Email peter_smith@horologix.com](mailto:peter_smith@horologix.com)

Bulle Clock Serial Number 203401



This photo shows the brass frame secured to the marble base with the two new screws. The wiring descends behind the frame pillar to the right. The owner has decided to fit replacement glass himself and so the photos only show the frame and no glass. Note the re-painted black coil casing.

On re-assembly it was found that the frame sat rather askew on the marble base. The holes in the frame had been widened at some point to try and counter this. I repositioned the threaded inserts slightly to try and help the situation but the central frame pillar which also passes through the base limited the options somewhat. The frame now sits straighter than it did but still not perfect.

The wiring would normally be secured in place behind the frame pillar but will need to be left loose so that the owner can lift the top and insert the glass.

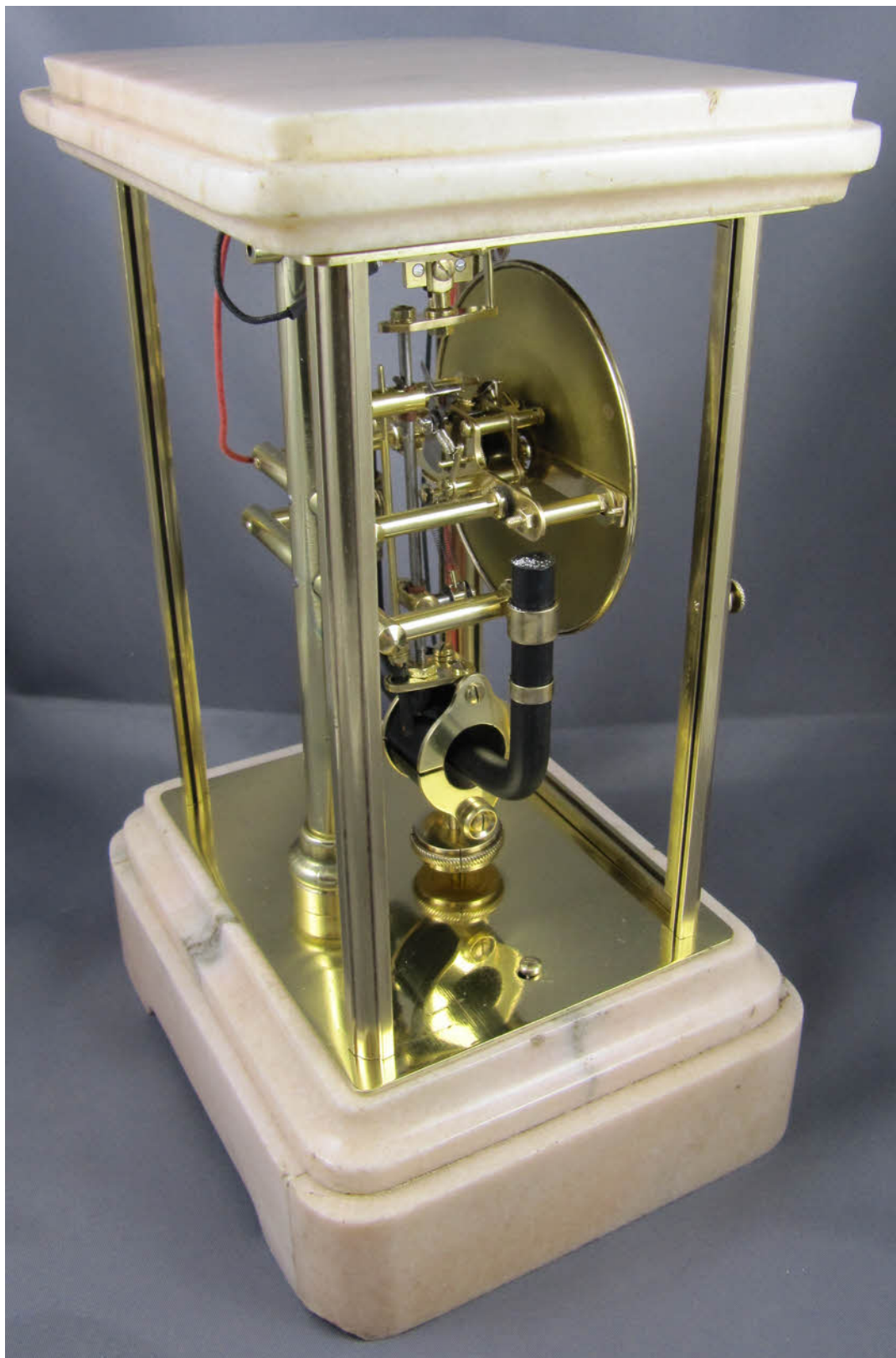
Horologix



The place to come for all your Bulle and Eureka restoration parts.

Contact Peter Smith
Telephone 01454-880825
Or Mobile 07969-773480
Email peter_smith@horologix.com

Bulle Clock Serial Number 203401



The rear and side of the completed clock.

Horologix



The place to come for all your Bulle and Eureka restoration parts.

Contact Peter Smith
Telephone 01454-880825
Or Mobile 07969-773480
[Email peter_smith@horologix.com](mailto:peter_smith@horologix.com)

Bulle Clock Serial Number 203401



The completed clock.